

Year 2: Geography

Big Question: Can I read and interpret a map?



Subject Specific Vocabulary

England	A country in the United Kingdom. Located in the continent of Europe.
map	A drawing of a particular area showing important information.
East Midlands	A county in England location in the middle towards the East.
Leicester	A city in England.
Compass	An instrument that you use for finding directions. It has a dial and a magnetic needle that always points to the north.
Key	A list of symbols on a map and their meanings.
Bird's eye view	A picture or drawing of something from up above (like a bird is looking down at it).
Route	A route is a way from one place to another.
Risk Assessment	The evaluation of the possible risks in a situation.

Sticky Knowledge

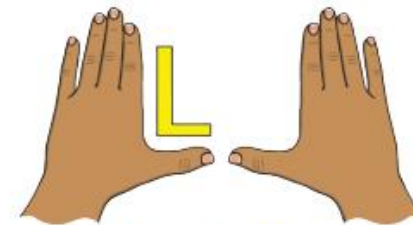
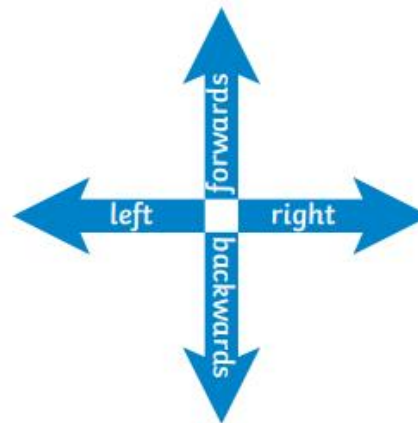
A map is a drawing or picture of a particular area such as a city, a country or a continent showing its main features as they would appear if you looked at them from a bird's eye view.

The four countries that make up the United Kingdom are England, Northern Ireland, Scotland and Wales.

Leicester is located in England in the United Kingdom. It is central to England in an area called the East Midlands.

The four compass points are North, South, East and West.

Western Park is located in Leicester on Glenfield Road, next to CTK Infant Site.



Left and Right
The hand that makes an L shape is the **left hand**.

